

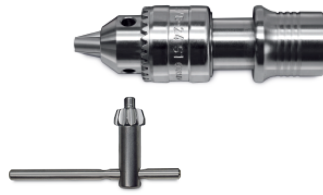


made in **GERMANY**

ORLOS_VET AIR DRILL SYSTEM

Attachments

Jacobs chuck
up to 7,0 mm cannulated
95-349.15VET



Quick action chuck for drill wires
from 0,8 to 3,00 mm
95-349.20VET



Protection guide sleeve for K-wire
95-349.21VET



AO-quick action chuck
95-349.25VET



Sagittal saw, oscillating with AO saw blade connection

Speed: 0-14000 cpm
95-349.50VET



TPLO saw, oscillating with saw blade size 24mm

Speed: 0-14000 cpm
95-349.51VET



TPLO saw oscillating saw blade size 13mm
95-349.51.13VET

TPLO saw oscillating saw blade size 18mm
95-349.51.18VET

TPLO saw oscillating saw blade size 24mm
95-349.51.24VET



95-349.03VET Air drill

Speed range stepless 0-1100rpm
Weight 800g
Working pressure min. 7,0bar up to max. 8,5bar

Cannulation diameter 3,2mm
Left and right turns as well as speed can be regulated by means of triggers on the handpiece and hose connection on handpiece = SYNTHES hose connection available in length 3,0m / 5m

HOSES WITH CONNECTION :
SYNTHES / SYNTHES
SYNTHES / DRÄGER
SYNTHES / INDUSTRIAL DIN 477
SYNTHES / SCHRADER BOC MA7

Air supply

Use only pure, dry compressed air filtered to 5 microns

Working pressure: min. 7,0 bar up to 8,5 bar

Flow rate: 300 l/min

Warning !

Care has to be taken with systems having a recycling of exhaust air that the pressure in the exhaust air hose, with running motor does not exceed 0,2 bar

Attachments



Sternum - Saw with saw blade
95-349.58VET



Sternum - Saw saw blade
95-349.58.1VET



Hose example:
Synthes/Synthes connection

Air Hoses

Synthes / Synthes hose
95-349.06VET Length 3m
95-349.07VET Length 5m



Dräger / Synthes hose
95-349.08VET Length 3m
95-349.09VET Length 5m



Schrader BOC MA7 / Synthes hose
95-349.10VET Length 3m
95-349.11VET Length 5m



Industrial DIN477/ Synthes hose
95-349.12VET Length 3m
95-349.13VET Length 5m



Attention

Hoses, do not clean in a ultra-sonic cleaner
Do not bend the hoses.
See instructions for hoses.

Cleaning the hoses

Clean the hose with mild cleaning solution and a brush. Dry the hose with a soft towel
! Do not immerse and do not put the hoses into the washing machine! Penetrated water has to be drained off immediately
Lubricate after cleaning and before Sterilisation

Sterilisation

Vacuum Steam Autoclave For parameter "see page D13"



Regulator industrial connection DIN477

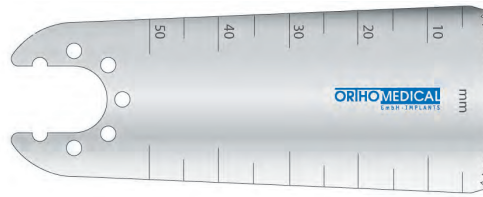


Regulator industrial
connection DIN477
95-349.00RVET

Industrial DIN477/ Synthes hose
95-349.12VET Length 3m
95-349.13VET Length 5m



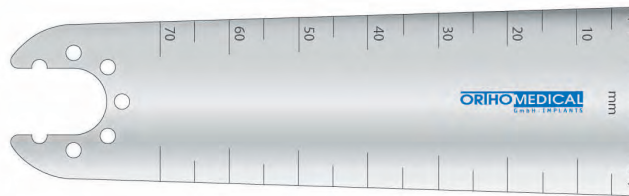
Saw blades AO connection for oscillating saw 95-349.51VET



95-349.60VET Blade thickness 0.4mm / Cut thickness 0.65mm / Tooth pitch (TPI)1.3mm / Useable length 50mm / Blade width 27mm



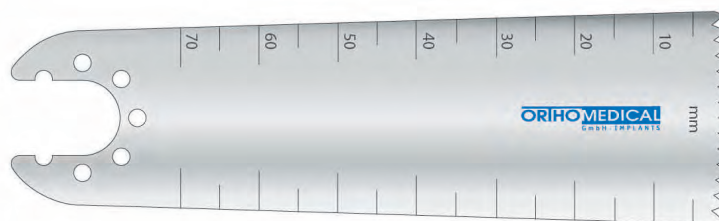
95-349.61VET Blade thickness 0.4mm / Cut thickness 0.65mm / Tooth pitch (TPI)1.3mm / Useable length 50mm / Blade width 14mm



95-349.62VET Blade thickness 0.6mm / Cut thickness 0.8mm / Tooth pitch (TPI)1.9mm / Useable length 71mm / Blade width 27mm



95-349.63VET Blade thickness 0.6mm / Cut thickness 0.8mm / Tooth pitch (TPI)1.9mm / Useable length 71mm / Blade width 50mm



95-349.64VET Blade thickness 0.8mm / Cut thickness 1.0mm / Tooth pitch (TPI)1.9mm / Useable length 71mm / Blade width 27mm

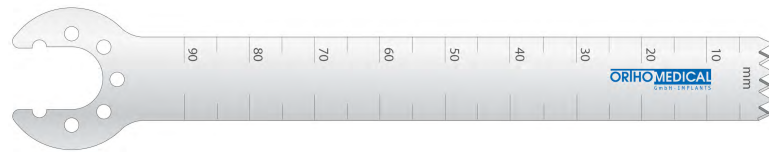
Saw blades AO connection for oscillating saw 95-349.51VET



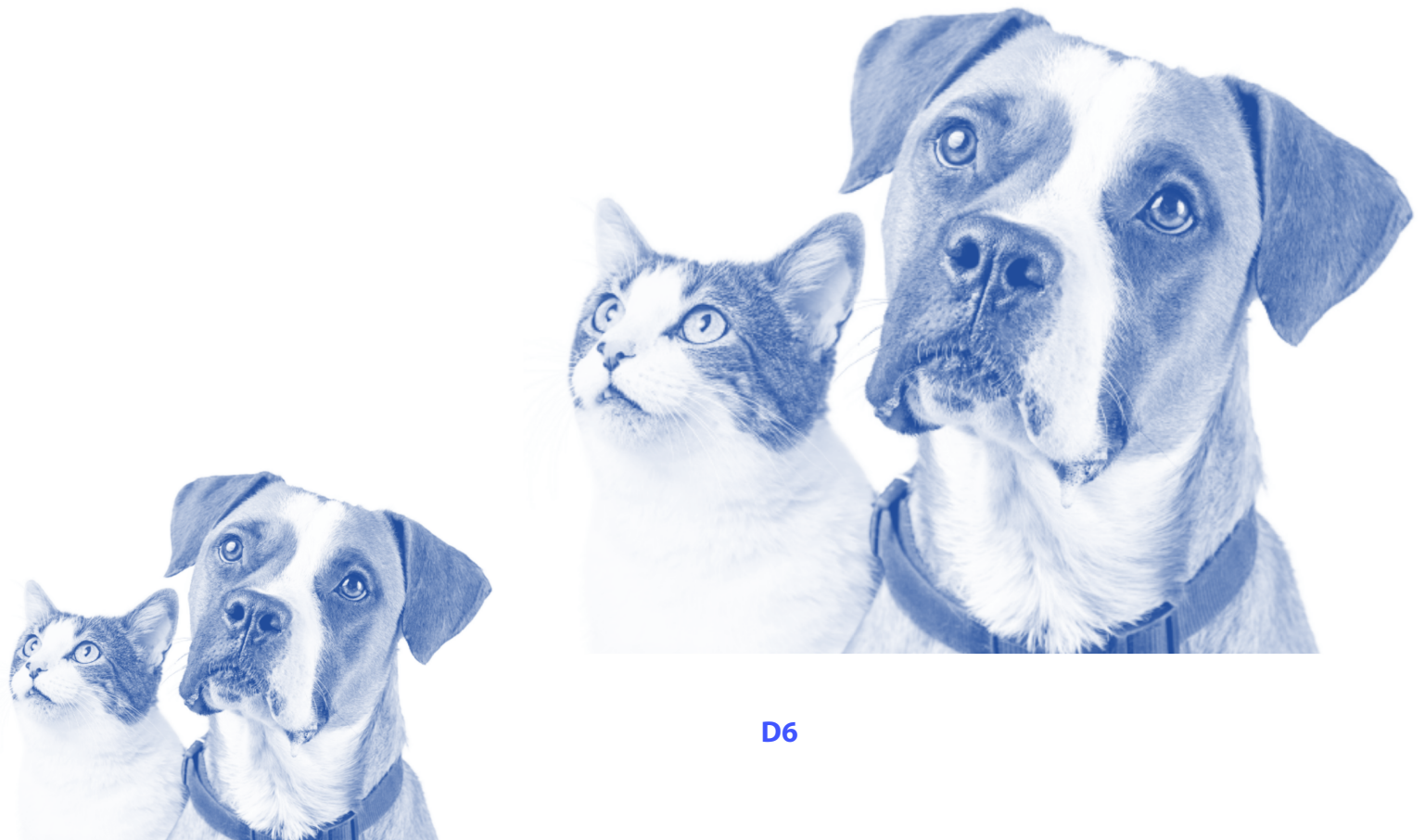
95-349.66VET Blade thickness 0.4mm / Cut thickness 0.65mm / Tooth pitch (TPI)1.2mm / Useable length 27mm / Blade width 6mm



95-349.67VET Blade thickness 0.4mm / Cut thickness 0.65mm / Tooth pitch (TPI)1.2mm / Useable length 27mm / Blade width 14mm



95-349.73VET Blade thickness 1.0mm / Cut thickness 1.2mm / Tooth pitch (TPI)1.3mm / Useable length 71mm / Blade width 27mm





IFU (GB) Air Drill

General Information

Use

The **Air drill System** is a pneumatic powered system used for many applications veterinary orthopedic and trauma surgery. To ensure proper operation of the air drill, use only original attachment and accessories

Patient safety

The AIRDRILL System may only be used after the medical personal have read this instruction.

Responsibility of the user

The user of the product is responsible for the proper use of the of system during operation.

Pictogram Symbol Explanation



FORWARD



REVERSE



NON STERILE



BATCH CODE



MANUFACTURING DATE



SEE INSTRUCTIONS FOR USE



CAUTION



Technical Data for 95-349.03VET Air Drill

Handpiece Order No 95-349.03VET

Cannulated diameter: 3.2mm

Speed: Stepless 0-1100 rpm (8.5 bar)

Power: 6 Nm

Weight: 800 Gram

Operating pressure: Min. 7 bar up to max. 8.5 bar
Min 87 psi up to max. 120 psi

Air consumption: 220 l/min

Noise level: 70 dB



Air supply

Use only pure, dry compressed air or nitrogen filtered to 5 microns.

Recommended working pressure: 8.5 bar

Flow rate: 300l/minute

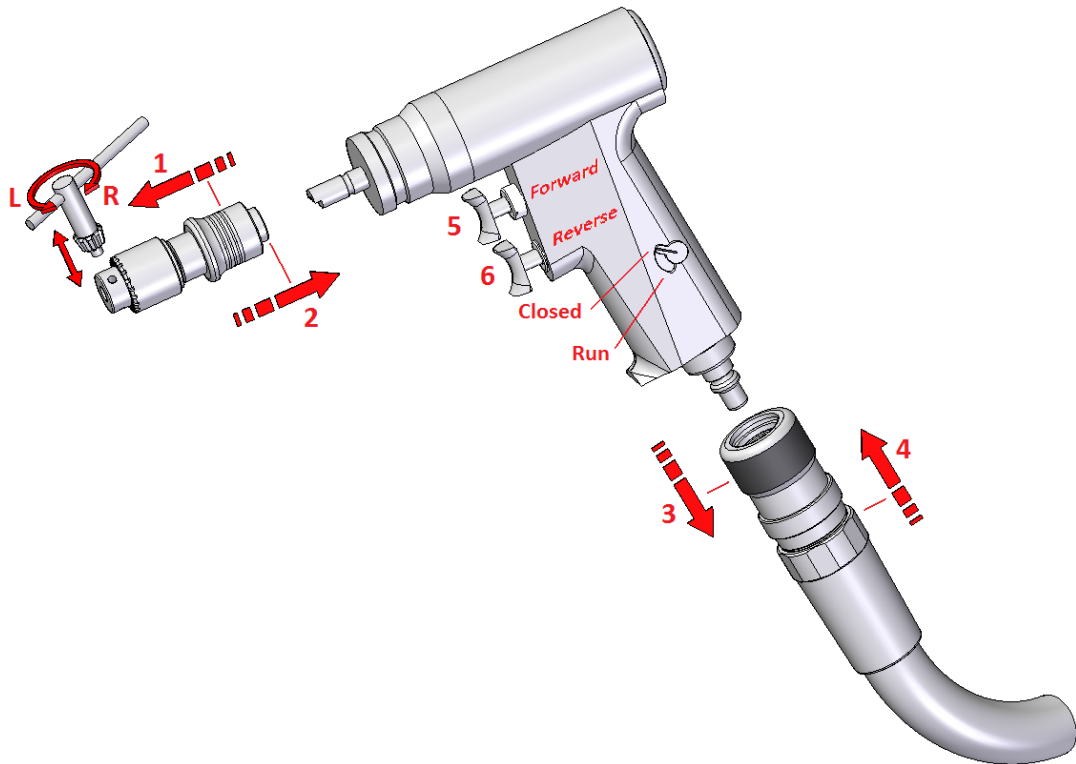
Warning!

care has be taken with systems having a recycling of exhaust air that the pressure in the exhaust air hose with running motor does not exceed 0.2 bar

Attachments are illustrated at page D3/D4



95-349.03VET Air Drill



Attachments

95-349.15VET Jacobs chuck; 95-349.25VET AO-chuck and 95-349.20VET Quick Action chuck for drill

wires

1. Pull the chuck sleeve back (1)
2. Insert the connecting piece to the drill.
Release the chuck sleeve.
Rotate the chuck gently until it enters the spindle fully.

Hose

These hoses have a quick air stop coupling

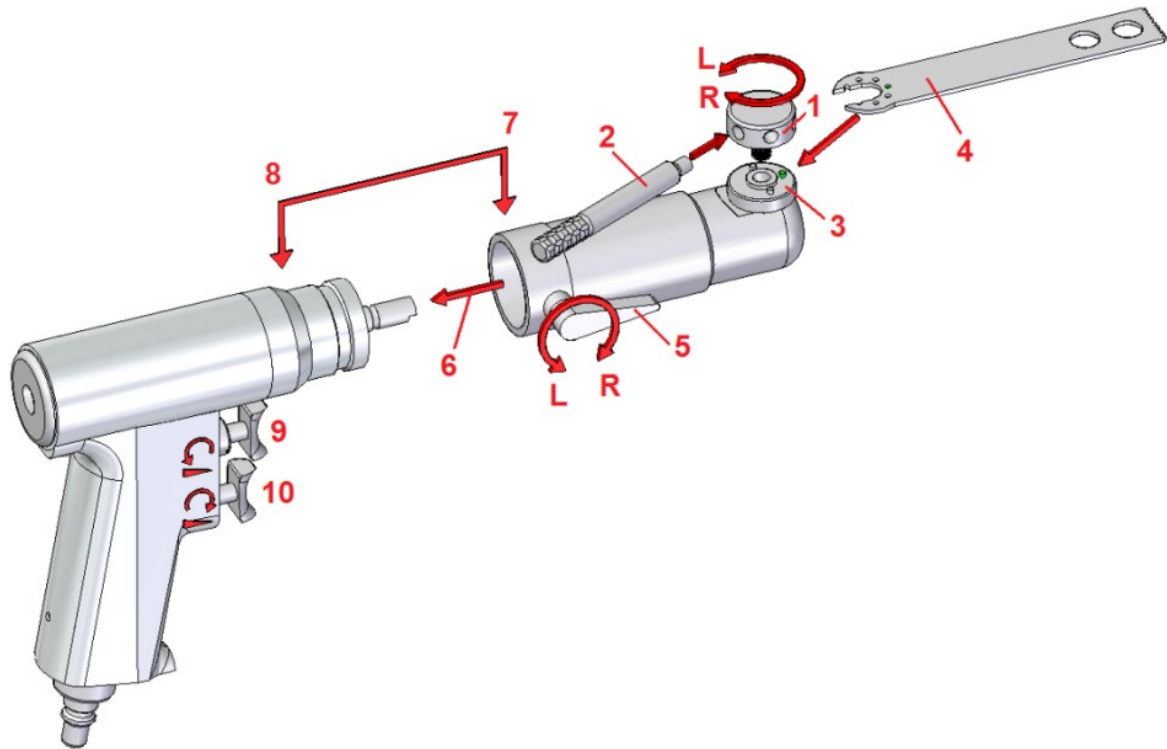
3. Grip the hose connector and pull the slip-ring back (3)
4. Push the hose connector to the hand piece.
Pull gently on the hose to check that is securely connected to the hand piece.

Hand piece

5. Top trigger: forward (clockwise rotation)
6. Bottom trigger: reverse (anti clockwise rotation)
The speed of the air drill increases progressively as the trigger is pressed.



Instruction for 95-349.50VET Oscillating Saw



1. Insert the blade (4) into the clamp (3) and locate the holes in the blade over the pins
2. Close the clamp screw (1) clockwise with No 2
3. Fit the saw attachment to the hand piece Pos.7 → 8
4. Close the locking screw (5) clockwise
(Saw blade No 4, Type Synthes, see our catalog)
5. **Attention!** check that the blade is secure in the blade clamp
Do not switch/change the direction of rotation while the saw is operating or working! Otherwise the Drill / saw may break and cause damage.

Troubleshooting

Oscillating saw vibrates too much	the saw blade has come to lose	check the clamp screw No 1
Bone and tool heat up during	the saw blade is blunt	replace the saw blade

Attention Saw Blades

Ensure that the saw blade is sharp and clean.

It is recommended to use a new blade for each operation.



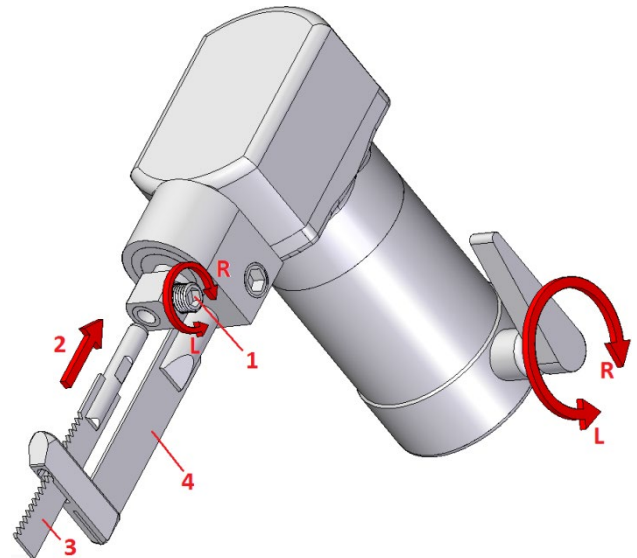
95-349.58VET Sternum Saw

New saw blade

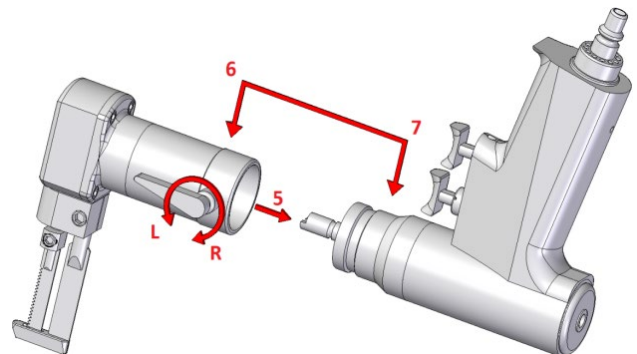
1. Open the screw 1 in direction L
2. Insert the saw blade 3 into the blade slot direction 2
3. Close the screw 1 in direction R (CLOCKWISE)

Attention

Check the saw blade 3 is running freely in the blade guard 4



4. Fit the saw attachment to the hand piece
Close the locking screw in direction R clockwise





Cleaning

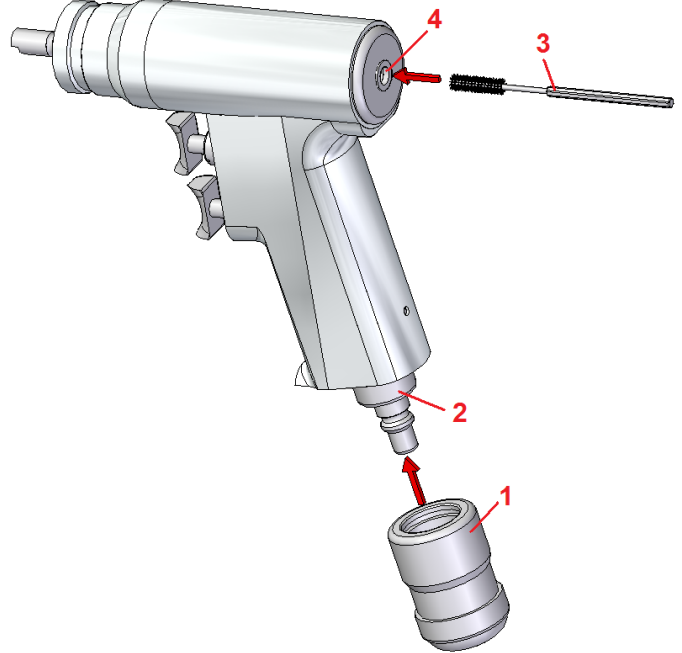
Do not clean the drill in an ultrasonic cleaner!

Do not immerse the hand piece.

Remove all attachments and accessories from the hand piece during cleaning. Ensure during cleaning that no fluid enters the hand piece.

Close the hand piece before cleaning **(Step 1 and 2)**

- Scrub the hand piece with a mild detergent and water using a nylon brush
- Remove all traces of debris and blood
- Check collets, internal drive sockets and cannulations and verify they are clean from debris and blood.
- Rinse off all traces of detergent with running water.
- Shake the instrument free of excess water and dry surface with a lint free trowel.



3. Cleaning brush

Lubrication

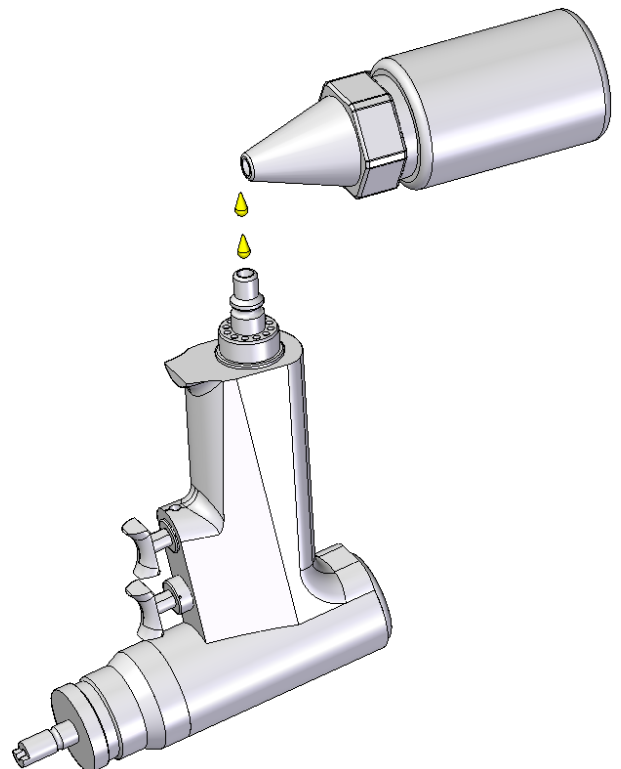
Warning: Do not lubricate a sterile instrument, attachment or hose.

After every second use turn the drill upside down and drip about 2 drops oil into the air inlet.

Connect the drill to the air supply and run for at least 20 seconds to ensure adequate dispersal of the lubricant.

Important:

Use only special oil





For Hoses and Regulator "see page D3 and D4"

Cleaning, Disinfection and Sterilisation

Cleaning & Disinfection

Wipe the surfaces immediately after use with a lint-free cloth moistened with a cleaning agent or disinfectant, or use a disinfectant spray, to prevent exudates or other contamination from drying on. For this manual wipe-down, use a cleaning agent or disinfectant approved for surface disinfection under national regulations (**DGHM – German Association of Hygiene and Microbiology**). Please follow the manufacturer's instructions for correct dilution, exposure time etc. In the case of heavy contamination, can also be cleaned under running water (machine cleaning is not permitted). **The dilution and application guidelines must be followed. Recommended pH value between 7.0 and 8.5!**

Note:

Excessive exposure to saline solutions or solutions containing iodine or chloride may cause harmful reactions. Damage may also be caused by strong acids and alkaline solutions or incorrectly used disinfectants. The quality of the water used for cleaning and rinsing another possible factor affecting corrosion or surface damage for the drill and attachments.

Always close the cap of before cleaning!

CAUTION!

Machine cleaning and ultrasonic cleaning in thermo disinfectors are not permitted!

Disinfection is required after every surgical intervention to destroy microorganisms. Today, health professionals and patients are at constantly increasing risk, so appropriate cleaning and disinfection of these drills and attachments are extremely important.

Only steam sterilise the instrument set!

Sterilisation (Required Only Steam Sterilisation should be used!)

The equipment must be Sterilised

- Before every surgical procedure
- Before passing to a service area
- Before returning to the supplier or manufacturer.
- **Warning:** Remove attachments and hoses before Sterilisation

Vacuum steam Sterilisation is the most effective method to Sterilise the drill.

The following methods and parameters should be used!

PRIOR TO STERILISATION!

CHECK THE EQUIPMENT TO ENSURE THAT THEY ARE FUNCTIONING PROPERLY AND ARE NOT DAMAGED

Steriliser: Steam autoclave, temperature = 121°C to 123°C, pressure = 15 to 17 psi (1-1.2 bar), at least 30 minutes in packaging materials suitable for sterilisation.
At temperatures of 131°C to 135°C and pressures of 15 to 17 psi (1-1.2 bar), the exposure time shortens to approx. 20 minutes.

Steriliser: Autoclave with prevacuum: during the prevacuum phase, the air is firstly evacuated from the chamber before the steam flows in. Standard cycle in packaging materials which are suitable for sterilisation: 132°C to 135°C at 27 to 30 psi (2-3 bar) with a minimum exposure time of 4 to 10 minutes.

The instruments supplied by us are not packed in materials which are suitable for sterilisation!

Important information: Prior to each use/sterilisation, all the parts of the instrument set are to be checked to ensure they are functioning properly.

CAUTION! DO NOT USE AND OPERATE WITH THE EQUIPMENT WHEN IT IS STILL IN WARM OR HOT CONDITION



Troubleshooting / Hazards

Problem	Possible causes	Remedy
Air drill does not start	<ul style="list-style-type: none"> Air motor is blocked from not working for a long time. Air motor is blocked from dirt inside 	
Air drill do not enough power	Air supply faulty	<ul style="list-style-type: none"> Check the central air supply Check pressure at regulator bottled Check the hose connectors for possible restriction
	Hose is to long	Check that the length of the hose does not exceed 8m
	Insufficient lubrication	refer to lubrication manual side
Attachment will not connect to the hand piece	drive spindle or attachment changed the geometry	<ul style="list-style-type: none"> Clean, oil and check it again Exchange and send it to the service
Tool will not fit into the attachment	<ul style="list-style-type: none"> debris inside the chuck Geometry of the tool has changed 	<ul style="list-style-type: none"> clean with a small brush replace the tool

Service and Repair

To return the air drill/attachment for repair or service

Please ensure that the parts has been decontaminated and sterilised

Pack the air drill/attachment securely and send to the next business partner-service address

Enclose a describing the reason for returning the air drill

Disassembling - mounting and repair of the equipment + service - inspections (after sales service) is just permitted from the Supplier & Manufacturer Company ORTHOMEDICAL GMBH/Germany !

Warranty

The warranty for machines and accessories does not cover damage of any kind resulting from improper use, servicing or repairs of unauthorized and also use of not compatible attachments.

In the event of failure to observe these instructions or demonstrable violation, no guarantee or compensation for damages can be provided.

ORTHOMEDICAL assumes no liability as described in this user guide of non-compliance defects and damage

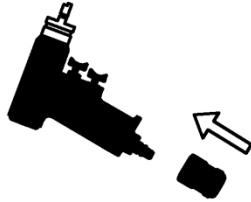
More Information ! www.orthomedical.de



Sterilisations -> Fast Instructions

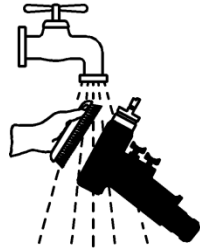
The right way

1.



Do not immerse and boil

2.



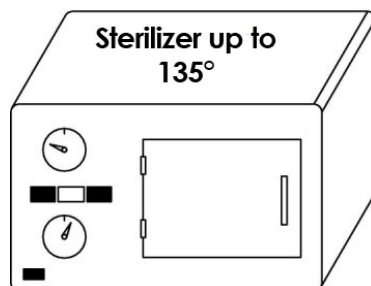
Do not clean with ultra-sonic cleaner

3.



Do not clean with acid and lye

4.



No mechanical treatment

