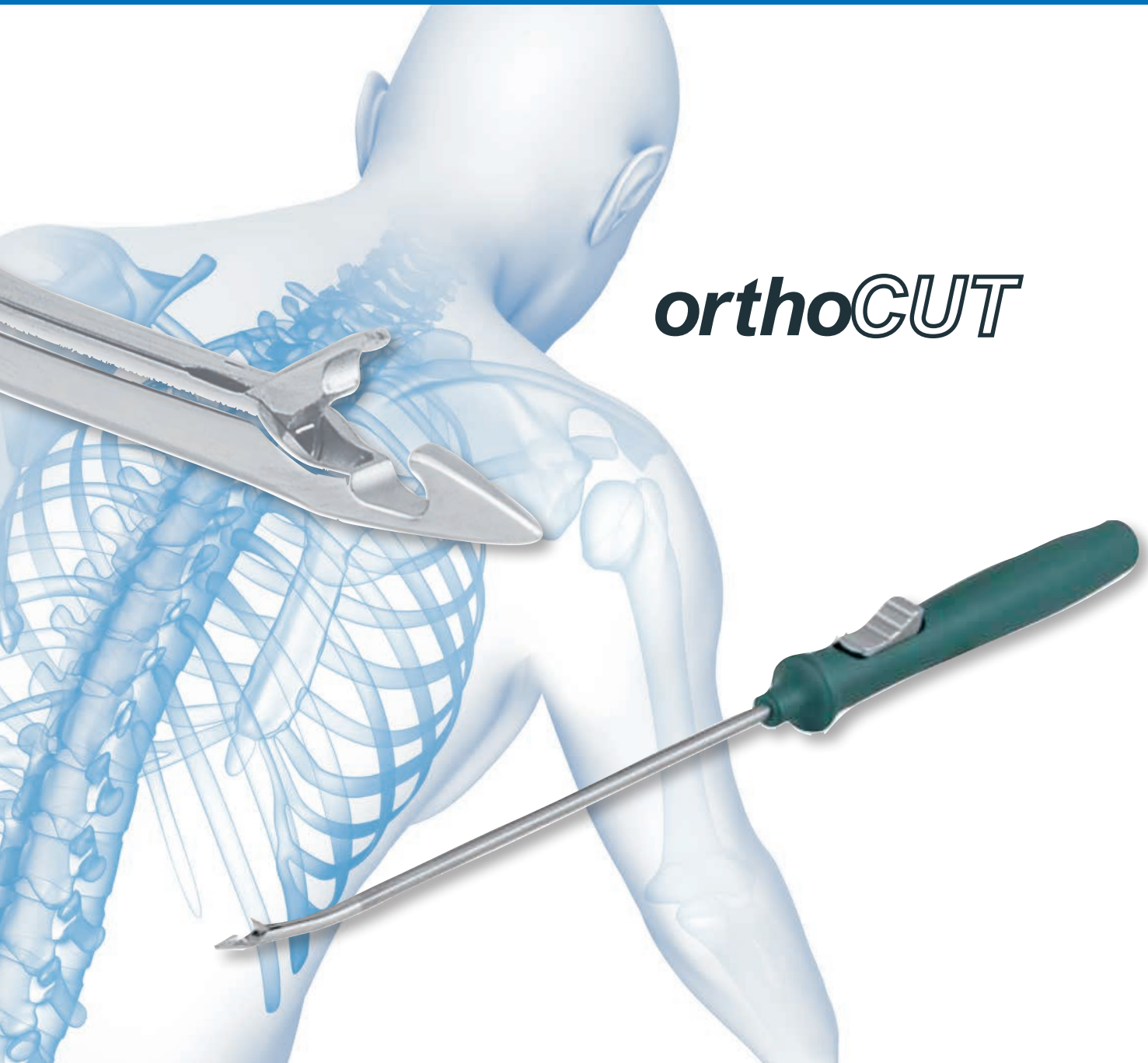


**Instrumente für die Arthroskopie der Schulter**  
**Instruments for Shoulder Arthroscopy**



***orthoCUT***

**ARTHROSKOPIE**  
**ARTHROSCOPY**



### **Gerade / Straight:**

**Schaft und Maulteil sind gerade**  
*The primary style for direct approach*



### **Maul angewinkelt / Upbiter:**

**Maulteil ist angewinkelt**  
*Angled up at the tip*



### **Aufgebogen / Upswept:**

**Instrument ist am Schaft aufgebogen**  
*Angled up on the shaft*



### **Links und rechts gebogen / Curved left and curved right:**

**Instrument ist am Schaft nach rechts oder links gebogen**  
*Curved on the shaft left or right*



### Standard Griff / Classic Handle

**Standard Griff für unsere Scheren, Stanzen und Zangen**  
*Scissors, basket punches and graspers are equipped with our traditional classic handle*



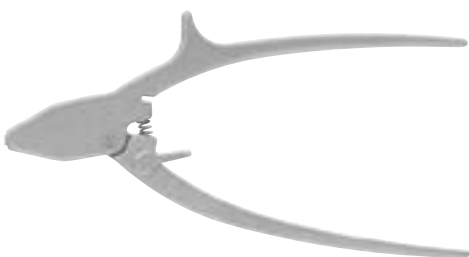
### Sperrengriff / ORTHO-Lock Handle

**Sperrengriff für alle Faszangen**  
*All graspers are equipped with this in inite-position locking-handle design*



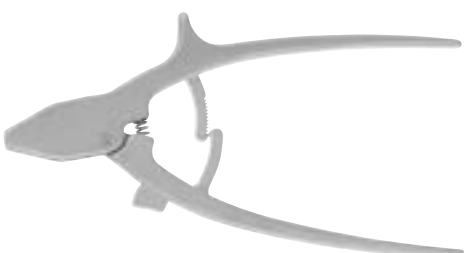
### Axialgriff / Axial Handle

**Axialgriff schwarz für Fadeninstrumente, in verschiedenen Farben lieferbar.**  
*Axial handle black available on suture instruments and different colours.*



### Axialgriff o. Sperre / Axial Handle w/o ratchet

**Axialgriff ohne Sperre für Fadeninstrumente**  
*Axial handle without ratchet available on suture instruments*



### Axialgriff m. Sperre / Axial Handle w. ratchet

**Axialgriff mit Sperre für Fadeninstrumente**  
*Axial handle with ratchet available on suture instruments*

## Fadeninstrumente / Suture Hook Instruments

Für den Bereich der Schulter wurden speziell diese Instrumente gefertigt. Das flache Profil und die scharfe Spitze erleichtern das Durchdringen des Gewebes sowie Fäden zu fassen und zu nähen. Auch bei den Instrumenten speziell zum Greifen und Fassen wird durch die Form des Maulteils der Eingriff erleichtert.

For the area of the shoulder, these instruments were specially manufactured. The low-profile and the highly sharpened tip allows easy passage through tissue in order to retrieve or apply suture. Also the instruments for grasping the engagement is facilitated by the shape of the jaw.



**Bird Beak, Fadenhalter**  
*Bird Beak, Suture Hook Forceps*



Beschreibung <i>Description</i>	Arbeitslänge <i>Working Length</i>	Standard Griff <i>Classic Handle</i>	Axialgriff ohne Sperre <i>Axial Handle w/o ratchet</i>	Axialgriff <i>Axial Handle</i>
<b>Schaft gerade*</b> <i>shaft straight</i>	155 mm	<b>54-050.01</b>	<b>54-050.02</b>	<b>54-050.03</b>
<b>Schaft aufgebogen 15°</b> <i>shaft upswept 15°</i>	155 mm	<b>54-050.11</b>	<b>54-050.12</b>	<b>54-050.13</b>



**Bird Beak, Fadenhalter**  
*Bird Beak, Suture Hook Forceps*



Beschreibung <i>Description</i>	Arbeitslänge <i>Working Length</i>	Standard Griff <i>Classic Handle</i>	Axialgriff ohne Sperre <i>Axial Handle w/o ratchet</i>	Axialgriff <i>Axial Handle</i>
<b>Schaft gerade, Maul 45° links gewinkelt*</b> <i>shaft straight jaw 45° angled left</i>	155 mm	<b>54-051.01</b>	<b>54-051.02</b>	<b>54-051.03</b>
<b>Schaft gerade, Maul 45° rechts gewinkelt</b> <i>shaft straight jaw 45° angled right</i>	155 mm	<b>54-051.11</b>	<b>54-051.12</b>	<b>54-051.13</b>



**Bird Beak, Fadenhalter,  
Maul aufgewinkelt**  
*Bird Beak, Suture Hook Forceps,  
upbiter*



Beschreibung <i>Description</i>	Arbeitslänge <i>Working Length</i>	Standard Griff <i>Classic Handle</i>	Axialgriff ohne Sperre <i>Axial Handle w/o ratchet</i>	Axialgriff <i>Axial Handle</i>
<b>Schaft gerade, Maul 20° aufgewinkelt*</b> <i>shaft straight, jaw 20° upbiter</i>	155 mm	<b>54-052.01</b>	<b>54-052.02</b>	<b>54-052.03</b>
<b>Schaft gerade, Maul 40° aufgewinkelt</b> <i>shaft straight, jaw 40° upbiter</i>	155 mm	<b>54-052.11</b>	<b>54-052.12</b>	<b>54-052.13</b>

The Bird Beak Suture Forceps is an innovative suture shuttling device which permits to perform several operations with a single instrument.

- To pierce the tissue, grab a suture located behind it and pull it forward
  - To pass a suture held between the jaws through the tissue and release it in its new position
  - To manipulate the suture either held firmly between the jaws or sliding freely within the round eyelet.
- The small diameter tip, the needle- sharp point and the streamlined contour of the instruments ensure the tissue remains practically undamaged.



... no more struggling in Arthroscopic Rotator Cuff repair; twist the hook and penetrate the tissue with ease ...

**Clever Hook, Fadenhalter**  
Clever Hook, Suture Hook



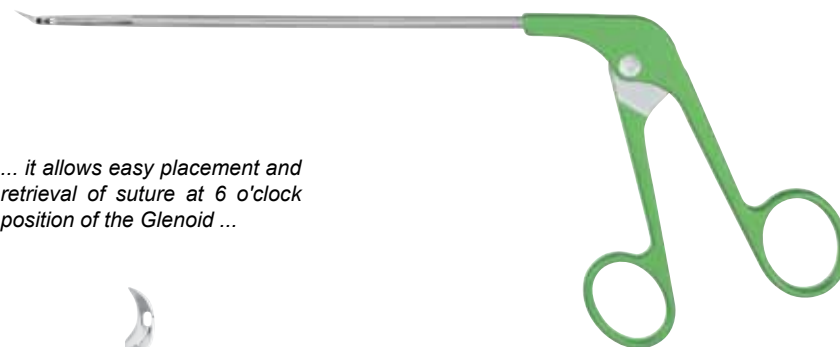
Beschreibung Description	Arbeitslänge Working Length	Standard Griff grün Classic Handle green	Axialgriff Axial Handle
Schaft gerade, rechts* shaft straight, right	155 mm	54-053.01	54-053.03



**Clever Hook, Fadenhalter**  
Clever Hook, Suture Hook



Beschreibung Description	Arbeitslänge Working Length	Standard Griff rot Classic Handle red	Axialgriff Axial Handle
Schaft gerade, links* shaft straight, left	155 mm	54-053.11	54-053.13



... it allows easy placement and retrieval of suture at 6 o'clock position of the Glenoid ...

**Sixter, Fadenhalter**  
Sixter, Suture Hook



Beschreibung Description	Arbeitslänge Working Length	Standard Griff grün Classic Handle green	Axialgriff Axial Handle
Schaft gerade, rechts* shaft straight, right	155 mm	54-053.21	54-053.23



**Sixter, Fadenhalter**  
Sixter, Suture Hook



Beschreibung Description	Arbeitslänge Working Length	Standard Griff rot Classic Handle red	Axialgriff Axial Handle
Schaft gerade, links* shaft straight, left	155 mm	54-053.31	54-053.33



**Fadengreifer, gerieft**  
*Suture Retriever Grasper, serrated*



Beschreibung <i>Description</i>	Arbeitslänge <i>Working Length</i>	Sperregriff <i>ORTHO-Lock Handle</i>	Axialgriff mit Sperre <i>Axial Handle with ratchet</i>
<b>Schaft gerade*</b> <i>shaft straight</i>	155 mm	<b>54-054.01</b>	<b>54-054.02</b>



**Fadengreifer, gerieft**  
*Suture Retriever Grasper, serrated*



Beschreibung <i>Description</i>	Arbeitslänge <i>Working Length</i>	Sperregriff <i>ORTHO-Lock Handle</i>	Axialgriff mit Sperre <i>Axial Handle with ratchet</i>
<b>Schaft gerade, Maul 45° links gewinkelt*</b> <i>shaft straight, jaw 45° angled left</i>	155 mm	<b>54-054.11</b>	<b>54-054.12</b>
<b>Schaft gerade, Maul 45° rechts gewinkelt</b> <i>shaft straight, jaw 45° angled right</i>	155 mm	<b>54-054.21</b>	<b>54-054.22</b>



**Fadengreifer, gerieft**  
*Suture Retriever Grasper, serrated*



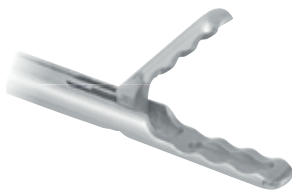
Beschreibung <i>Description</i>	Arbeitslänge <i>Working Length</i>	Sperregriff <i>ORTHO-Lock Handle</i>	Axialgriff mit Sperre <i>Axial Handle with ratchet</i>
<b>Schaft gerade, Maul 15° aufgewinkelt*</b> <i>shaft straight, jaw 15° upbiter</i>	155 mm	<b>54-054.31</b>	<b>54-054.32</b>



**King Fadengreifer, kreuzgerieft**  
*King Suture Retriever Grasper, cross serrated*



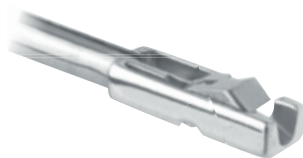
Beschreibung <i>Description</i>	Arbeitslänge <i>Working Length</i>	Sperregriff <i>ORTHO-Lock Handle</i>	Axialgriff mit Sperre <i>Axial Handle with ratchet</i>
<b>Schaft gerade*</b> <i>shaft straight</i>	155 mm	<b>54-054.41</b>	<b>54-054.42</b>



**Gewebefasszange**  
*Tissue Grasping Forceps*



Beschreibung <i>Description</i>	Arbeitslänge <i>Working Length</i>	Sperregriff <i>ORTHO-Lock Handle</i>	Axialgriff mit Sperre <i>Axial Handle with ratchet</i>
<b>Schaft gerade*</b> <i>shaft straight</i>	155 mm	<b>54-055.01</b>	<b>54-055.02</b>



**Fadenstanze**  
*Suture Punch*



Beschreibung <i>Description</i>	Arbeitslänge <i>Working Length</i>	Standard Griff <i>Classic Handle</i>	Griff mit Positionierung <i>ORTHO-Safe-Lock handle</i>	Axialgriff ohne Sperre <i>Axial Handle w/o ratchet</i>
<b>Schaft gerade</b> <i>shaft straight</i>	155 mm	<b>54-056.03</b>	<b>54-056.01</b>	<b>54-056.02</b>

*ORTHO-Safe-Lock:  
A locking mechanism  
to prevent premature  
cutting of the suture.*



The Sliding Suture Cutter is designed to cut suture blindly when visualization of the knot is not possible, or when the surgeon prefers to cut suture without reverting to the arthroscopic image.

The Sliding knot Suture Cutter has a single eyelet large enough to accommodate sutures.

**ORTHO-Safe-Lock:**  
A locking mechanism to prevent premature cutting of the suture.



**Sliding, Fadenschneider**  
Sliding, Suture Hook

Beschreibung Description	Arbeitslänge Working Length	Griff mit Positionierung ORTHO-Safe-Lock handle
<b>Schaft gerade - ohne Abbildung</b> shaft straight - not illustrated	<b>Fadenschneider 155mm</b> Sliding Suture Cutter 155mm	<b>54-057.11</b>

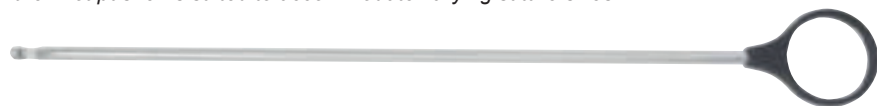


**Fadenmanipulator**  
Suture Manipulator Grasper



Beschreibung Description	Arbeitslänge Working Length	Standard Griff Classic Handle	Axialgriff ohne Sperre Axial Handle w/o ratchet
<b>Schaft gerade*</b> shaft straight	155 mm	<b>54-058.01</b>	<b>54-058.02</b>

The Knot Pusher/Manipulator are designed to facilitate tying both sliding and non-sliding knots arthroscopically. The tip is a complete rounded ring that reduces the friction on the suture while sliding the knots. The eyelet of the knot pusher is suited to accommodate varying suture sizes.



**Knotenschieber, geschlossen**  
Knot Pusher/Manipulator, full loop

Beschreibung Description	Arbeitslänge Working Length	
<b>Schaft gerade</b> shaft straight	125 mm	<b>54-060.13</b>
<b>Schaft gerade</b> shaft straight	155 mm	<b>54-060.16</b>
<b>Schaft gerade</b> shaft straight	220 mm	<b>54-060.22</b>





Ortho-Medical GmbH | Hauptstrasse 5 | 78589 Dürbheim | Germany  
Telephone +49 (74 24) 94 03-40 | [mail@orthomedical.de](mailto:mail@orthomedical.de) | [www.orthomedical.de](http://www.orthomedical.de)

Edition 2019/08 | Revision : 15.08.2019

Printed in Malaysia · Copyright by ORTHO-MEDICAL GmbH, Implants

We reserve the right to make alterations.