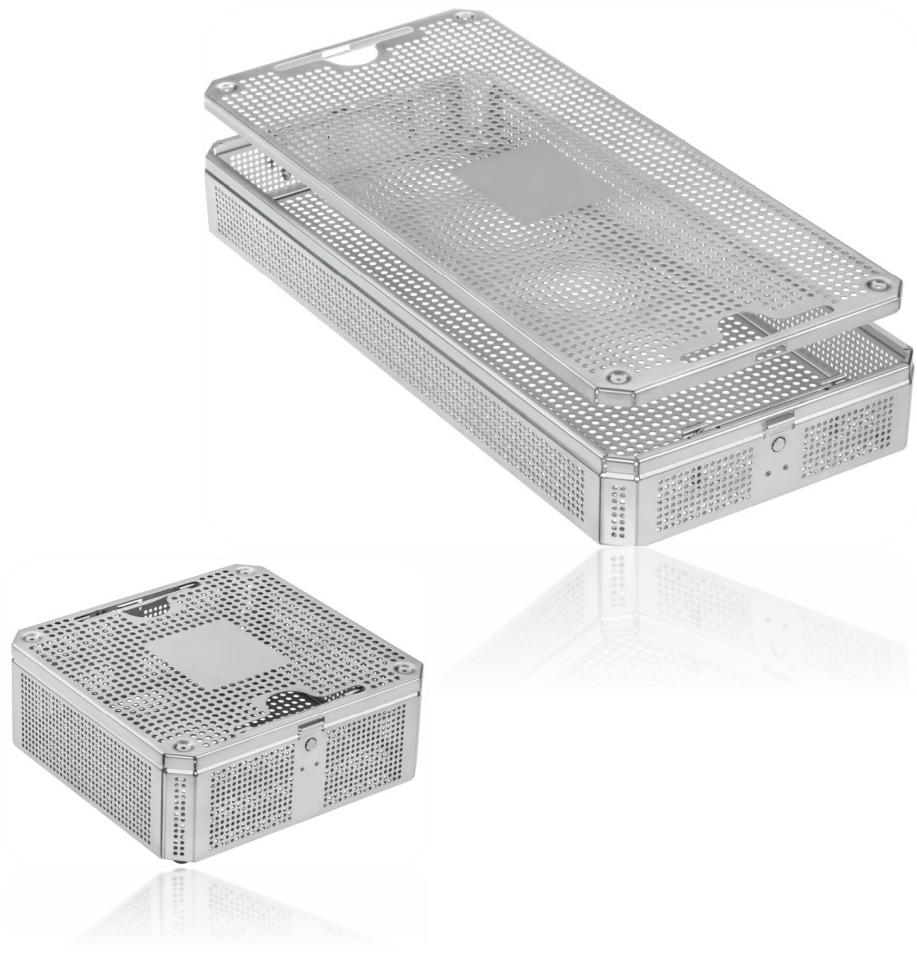
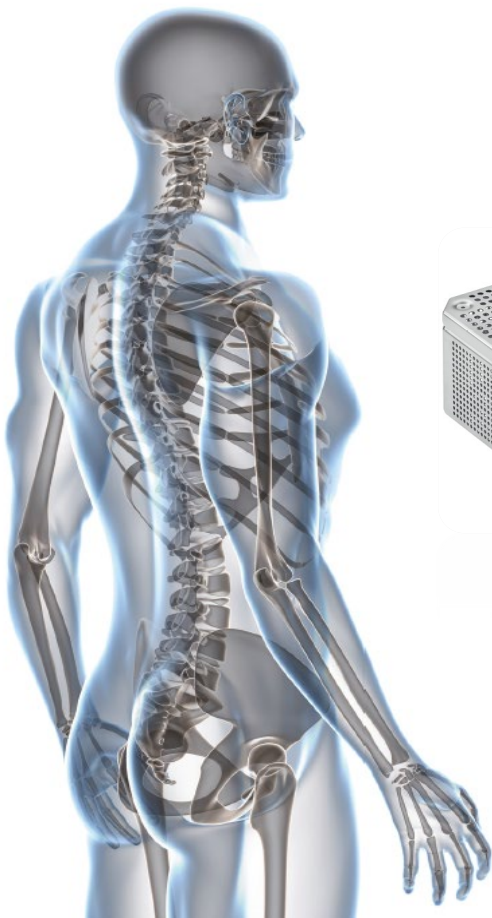
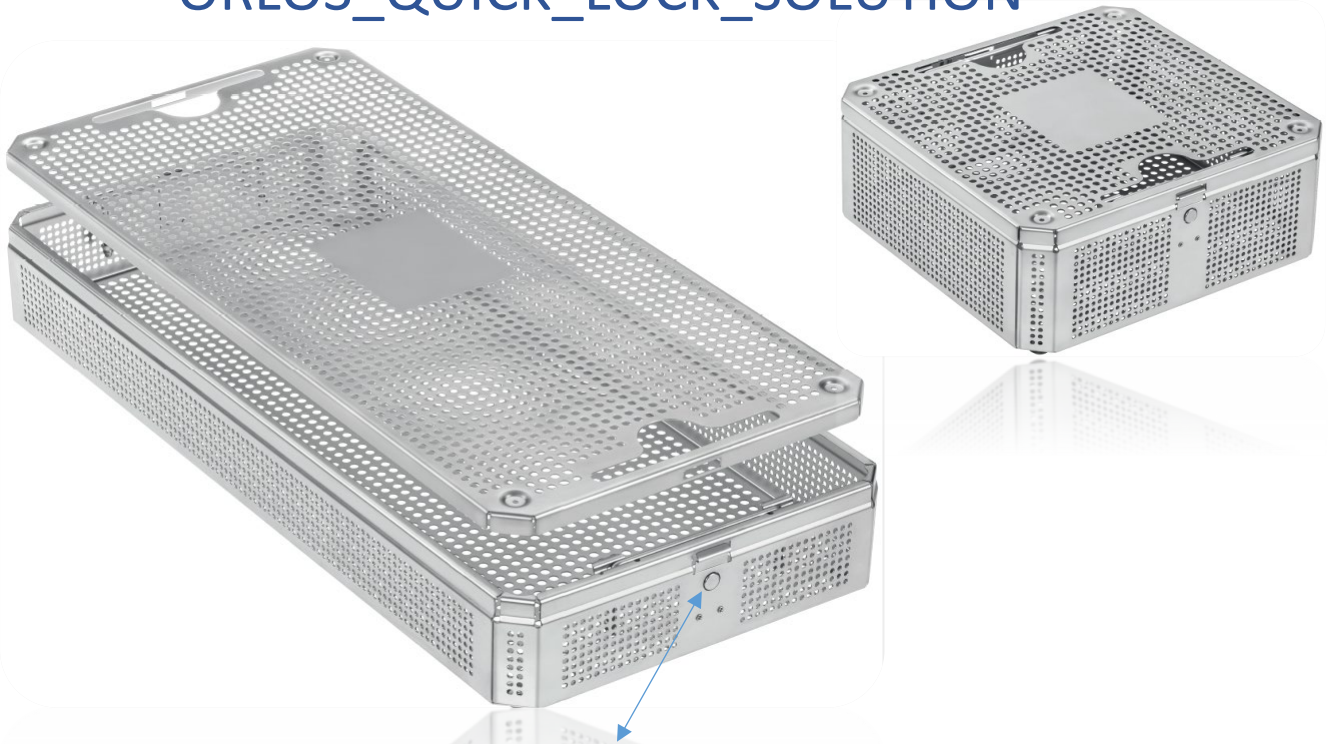


SOLUTION & INNOVATION FOR STORAGE AND  
REPROCESSING!



**ORLOS\_STEEL\_QUICK\_LOCK\_SYSTEM**

## ORLOS\_QUICK\_LOCK\_SOLUTION



TO UNLOCK THE LID FOR OPENING THE TRAY PRESS TOGETHER THE LEFT -AND RIGHT BOTTOMS!

AVAILABLE TRAY WITH LIDS:

- 1/2 SIZE TRAYS WITH LID
- 3/4 SIZE TRAYS WITH LID
- 1/1 SIZE TRAYS WITH LID
- DENTAL / VET. SIZE TRAYS WITH LID



## STEEL\_QUICK\_LOCK\_TRAYS\_AND\_LIDS



REF.	PRODUCT DESCRIPTION
60-710.050	TRAY 1/2 SIZE 243 x 252 x 57 mm ( Steel )
60-710.070	TRAY 1/2 SIZE 243 x 252 x 69 mm ( Steel )
60-710.100	TRAY 1/2 SIZE 243 x 252 x 99 mm ( Steel )
60-718.024	LID 1/2 SIZE 243 x 252 x 12mm ( Steel )
60-712.050	TRAY 3/4 SIZE 404 x 252 x 57 mm ( Steel )
60-712.070	TRAY 3/4 SIZE 404 x 252 x 69 mm ( Steel )
60-712.100	TRAY 3/4 SIZE 404 x 252 x 99 mm ( Steel )
60-712.120	TRAY 3/4 SIZE 404 x 252 x 120 mm ( Steel )
60-718.040	LID 3/4 SIZE 404 x 252 x 12 mm ( Steel )
60-716.050	TRAY 1/1 SIZE 542 x 252 x 57 mm ( Steel )
60-716.070	TRAY 1/1 SIZE 542 x 252 x 69 mm ( Steel )
60-716.100	TRAY 1/1 SIZE 542 x 252 x 99 mm ( Steel )
60-718.054	LID 1/1 SIZE 542 x 252 x 12 mm ( Steel )

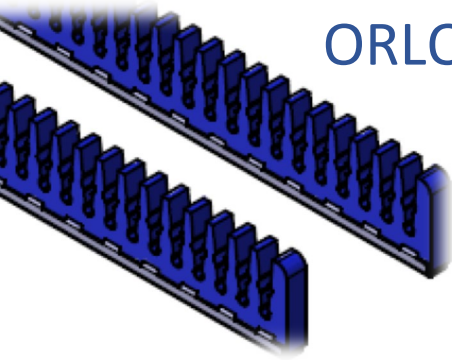


## STEEL\_DENTAL / VET.\_TRAYS\_AND\_LIDS



REF.	PRODUCT DESCRIPTION
60-709.035	TRAY DENTAL / VET. SIZE 270 x 170 x 35 mm ( Steel )
60-709.050	TRAY DENTAL / VET. SIZE 270 x 170 x 50 mm ( Steel )
60-709.070	TRAY DENTAL / VET. SIZE 270 x 170 x 70 mm ( Steel )
60-709.090	TRAY DENTAL / VET. SIZE 270 x 170 x 90 mm ( Steel )
60-718.027	LID DENTAL / VET. SIZE 270 x 170 x 12mm ( Steel )

## ORLOS\_SILCONE\_MODULAR\_SLIDES



**REF.**

60-684.001

**PRODUCT DESCRIPTION**

Silicone Slide Pair ( 2 Pcs. with Locking Screws )  
for Steel Trays, Silicone Blue 241 x 10 x 42mm with Dia. 5.0 / 7.0mm  
with Dia. 5.0mm / Dia. 7.0mm



**REF.**

60-684.002

**PRODUCT DESCRIPTION**

Silicone Slide Pair ( 2 Pcs. with Locking Screws )  
for Steel Trays, Silicone Blue 162 x 10 x 42mm  
with Dia. 5.0mm / Dia. 7.0mm



**REF.**

60-684.003

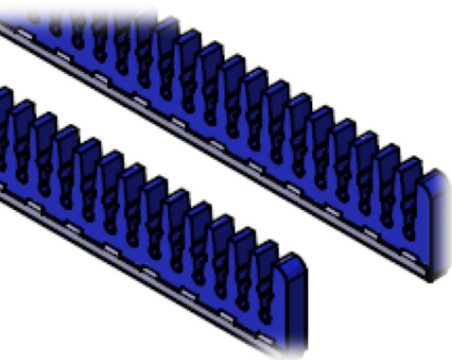
**PRODUCT DESCRIPTION**

Silicone Slide Pair ( 2 Pcs. with Locking Screws )  
for Steel Trays, Silicone Blue 162 x 10 x 27.5mm  
with Dia. 5.0 / Dia. 6.0mm



CONTACT US FOR FURTHER  
INFORMATION!

[www.orthomedical.de](http://www.orthomedical.de)



# ORTHO MEDICAL

G m b H · I M P L A N T S



Ortho-Medical GmbH | Hauptstraße 5 | 78589 Dürbheim | Germany  
Telephone +49 (7424)9403-40 | mail@orthomedical.de | www.orthomedical.de

Edition 2019|10 | Revision: 19.07.2019  
Printed in Malaysia | Copyright by ORTHO MEDICAL GmbH, Implants  
We reserve the right to make alterations